



MOOOOIVING FORWARD TOGETHER

Strategies for Montana Beef to School



Presented by Aubree Roth

On behalf of the Montana Beef to School Project

Principal Investigator & Lead Author: Carmen Byker Shanks





The Montana Beef to School Project

Together we find strategies to encourage the use of local beef in **every** Montana school



Montana Producers + Processors

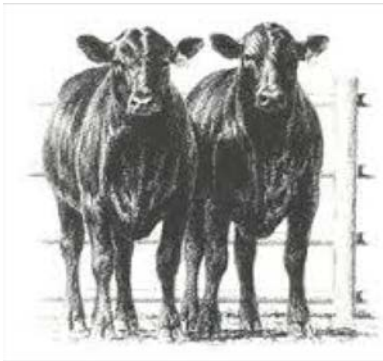


This material is based upon work that is supported by the National Institute of Food and Agriculture, U.S. Department of Agriculture, under award number SW 15-028 through the Western Sustainable Agriculture Research and Education program under subaward number 140867026. USDA is an equal opportunity employer and service provider.



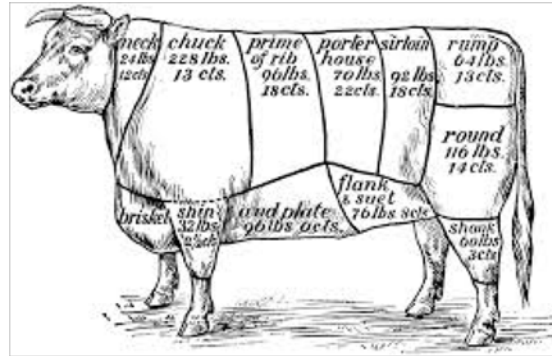


The Beef to School Equation



Beef Producer

+



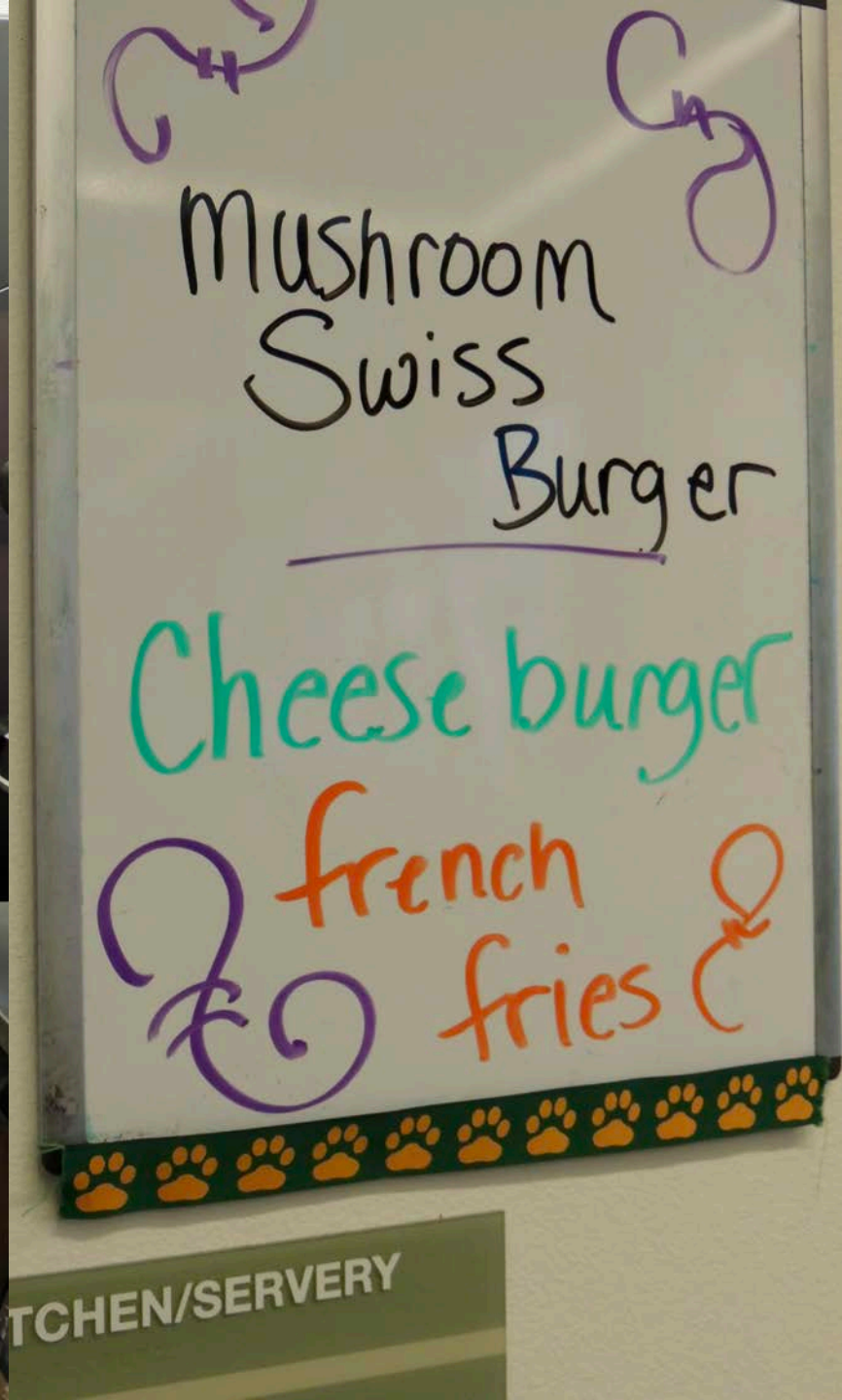
Beef Processor

+



School
Foodservice





ITCHEN/SERVERY



TO OPEN

Chocolate Fat Free Milk

TruMoo
Chocolate
Fat Free Milk

Meadow Gold

Nutritious & Delicious

TruMoo
Chocolate
Fat Free Milk

100% Fat Free Milk



SEVEN DAYS
WITHOUT
BEEF
MAKES ONE WIFE


Crazy Peak
CATTLEWOMEN

SEVEN DAYS
WITHOUT
BEEF
MAKES ONE WIFE

SEVEN DAYS
WITHOUT
BEEF
MAKES ONE WIFE



Farm to school program off and running

By Virginia Kuhn-Kempster
Times Staff Writer

A program that connects students and farmers is off and running in the Valley. The program, called "Local Beef," is a partnership between the local beef industry and the local school system. The program is designed to provide students with fresh, local beef products.

A group of local beef producers and school officials met to discuss the program. The group decided to start with a pilot program in the Valley. The program will provide students with fresh, local beef products. The program is designed to provide students with fresh, local beef products.





Thank you Beaverhead County

Christiansen East Bench Ranch
Wisdom Cattle Company
Dr. Patricia Grantham
Dr. Ron Loge
Big Sky Motors

Todd and LaTresha Garrison
Centennial Livestock
Dr. Curtis Blake
Malesich Ranch
Todd Hazelbaker
Mike Pettit

Seth and Pam Stoddard
Huntley Ranches
Dr. Burke Hansen
David Schuett
Tom Mitchell
Ned Becker

Helle Ranches
Tom Paffhausen
Dr. Karen Weed
KDBM
Robert Bump



Learn More

Contact Us at beef2school@gmail.com

Facebook: facebook.com/montanafarmentoschool
@Montana Farm to School

Web: www.montana.edu/mtfarmtoschool/beeftoschool.html

Download the case study report goo.gl/hr7cOA