

MACDEP NEWS

MONTANA ASSOCIATION OF COMMUNITY DEVELOPMENT EXTENSION PROFESSIONALS

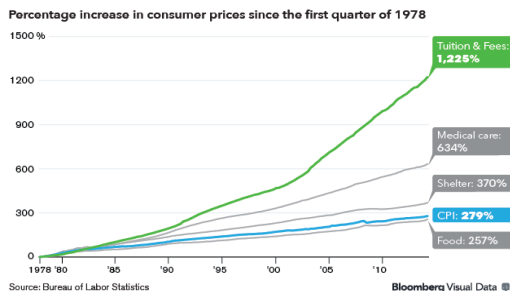
March 2016

Reports & Resources

College Tuition Costs Soar

[Bloomberg](#) | [READ STORY](#)

The cost of higher education has jumped more than 13-fold in records dating to 1978, illustrating bloated tuition costs even as enrollment slows and graduates struggle to land jobs. The chart shows that tuition expenses have ballooned 1,225 percent in the 36-year period, compared with a 634 percent rise in medical costs and a 279 percent increase in the consumer price index.



Out of Reach: The Child Care Crisis in the United States

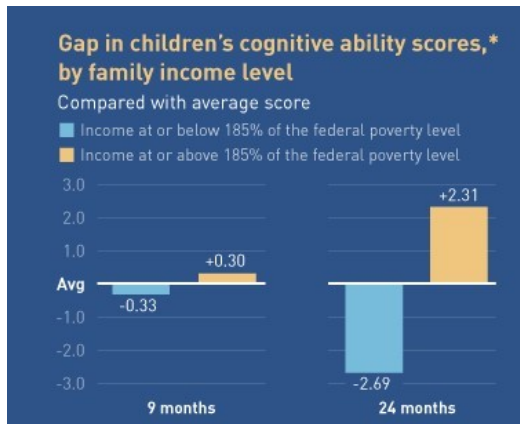
[American Progress](#) | [READ STORY](#)

President's Corner

Congratulations to the following MACDEP members for submitting successful proposals to the June NACDEP Conference in Vermont: **Tara Mastel** leading a panel discussion on her oil and gas leadership institute, **Dan Clark** and **Blake Christensen** presenting a leadership workshop, and yours truly presenting with colleagues on community climate change programming. Registration for the [NACDEP Conference](#) is now open and MACDEP professional development funds are available for travel.

The Western Rural Development Center's [Community Development Extension Institute](#) will be held in Jackson, WY, May 22-24, 2016. The agenda will be

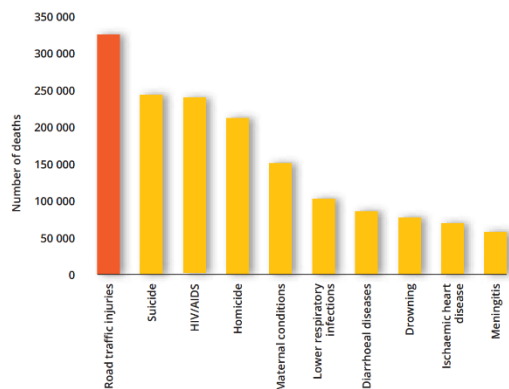
The lack of affordable, high-quality child care has quickly become a crisis for families in the United States. According to the Center for American Progress, the current child care landscape is not working and is impacting children, families, and the economy.



The Countries With The Most Per Capita Road Deaths

World Health Organization | [READ STORY](#)

Every year, around 1.3 million people die in road traffic accidents worldwide, a higher annual death toll than from malaria. The [World Health Organisation](#) (WHO) estimates that car crashes cost the global economy up to \$500 billion each year, and they have become the leading cause of death for young people aged between 5 and 29.



coming out soon. Please contact me at commdev@montana.edu if you're interested to attend and coordinate travel.

Scholarships are now available to attend the [2016 Community Development Society / International Association for Community Development Conference](#), July 23-27, 2016 Conference, Twin Cities, MN; the scholarship application [forms](#) are due March 31.

-Paul Lachapelle
MACDEP President

Upcoming Events

IACD Sustainable Communities Practice Exchange

March 10-21, 2016
India
Sponsor: International Association for Community Development

Community Development Training

March 28- April 1, 2016
St. Louis, Missouri
Sponsor: MU Extension's Community Development Program

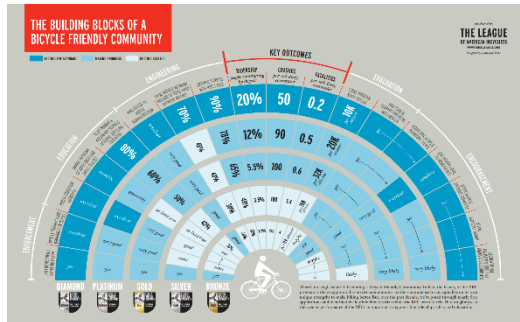
Extension Sustainability Summit 2016

April 5-7, 2016
Portland, OR

What Makes A Bike-Friendly Community

Mode Shift | [READ STORY](#)

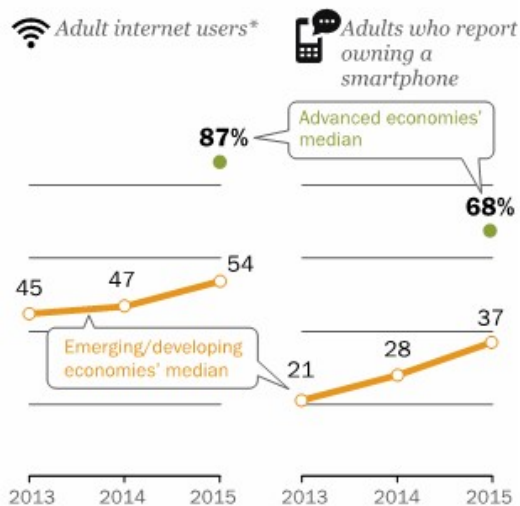
What are the key components that make a community bicycle-friendly? The League of American Bicyclists created an infographic to help answer those questions.



Smartphone Ownership and Internet Usage Continues to Climb in Emerging Economies

Pew Research Center | [READ STORY](#)

There has been a noticeable rise over the past two years in the percentage of people in the emerging and developing nations surveyed by Pew Research Center who say that they use the internet and own a smartphone.



Sponsor: Western Rural Development Center

Growing Entrepreneurial Communities Summit

May 4-5, 2016
Kansas City, MO
Sponsor: Center for Rural Entrepreneurship

Community Development Extension Institute

May 22-24, 2016
Jackson, WY
Sponsor: Western Rural Development Center

2016 NACDEP/ANREP CONFERENCE

June 26-29, 2016
Burlington, VT
Sponsor: NACDEP / ANREP

Joint IACD/CDS International Conference

July 24-27, 2016
Bloomington, MN
Sponsor: IACD / CDS

Grants, Awards & Jobs

Rural Community Investment

Deadline: Ongoing
Funder: CHS, Inc.

Community Building Grants

Deadline: Ongoing
Funder: Singing for Change

Sports and Community Development

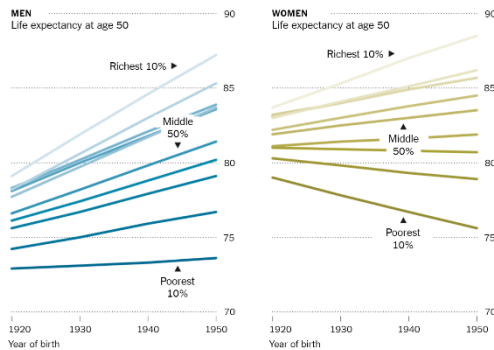
Deadline: Open
Funder: Adidas Group



Disparity in Life Spans of the Rich and the Poor Is Growing

NY Times | [READ STORY](#)

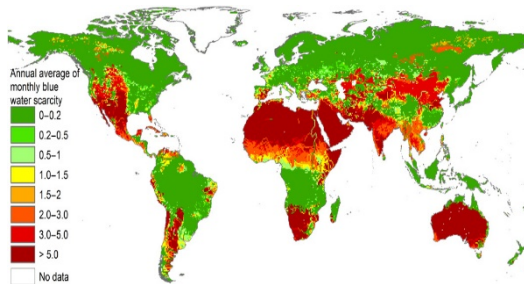
Experts have long known that rich people generally live longer than poor people. But, despite big advances in medicine, technology and education, the longevity gap between high-income and low-income Americans has been widening sharply.



4 Billion People at Risk as Water Table Dropping All Over the World

Common Dreams | [READ STORY](#)

A new [analysis](#) reveals that global water scarcity is a far greater problem than previously thought, affecting 4 billion people - two-thirds of the world's population - and will be one of the most difficult and important challenges of this century.



Developing Healthy Places

Deadline: Ongoing
Funder: The Kresge Foundation

National/International News

Powerful Earthquake Strikes Near Indonesia

The Guardian, Mar 2nd

UN Imposes Tough North Korea Sanctions

BBC News, Mar 2nd

Spanish Government Deadlock Continues

NY Times, Mar 2nd

E.U. Reveals \$760M Immigration Plan

USA Today, Mar 2nd

Pentagon Asks Hackers to Test Security

USA Today, Mar 1st

Montana News

Montana Schools Face Building Crisis

Billings Gazette, Feb 17th

Montana Witnesses Day of Action

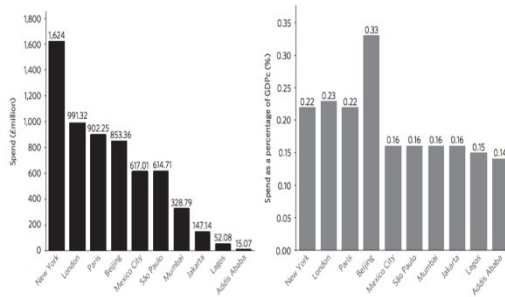
Billings Gazette, Mar 1st

Thousands Pour Into Montana Governor's Race

Huge Divide in Spending on Climate Change Adaptation

Carbon Brief | [READ STORY](#)

The amount of money going towards adapting to climate change in ten of the world's biggest cities has increased by a quarter in recent years, according to new research. Against a backdrop of a global recession, this might seem like good news. But representing at most 0.33% of a city's wealth, resilience-building is still a small fraction of total spending.



Great Falls Tribune, Mar 1st

Bozeman Considers Park Maintenance Tax

NBC Montana, Mar 1st



MSU Extension Community Development | Wilson Hall 2-117 P.O. Box 172240 | Bozeman, MT 59717-2240
Tel: (406) 994-3620

Back issues of the MACDEP E-news are available [here](#)

To subscribe to the Montana CD E-Newsletter, send a request to: commdev@montana.edu