

MACDEP NEWS

MONTANA ASSOCIATION OF COMMUNITY DEVELOPMENT EXTENSION PROFESSIONALS

April 2012

Reports & Resources

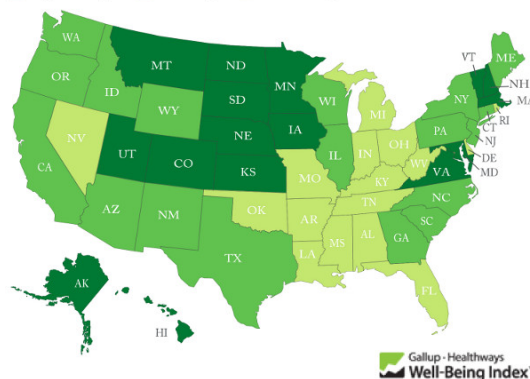
Montana Ranks Among Happiest States

GALLUP | [READ STORY](#)

This GALLUP Wellbeing study, based on daily surveys conducted through the end of 2011, presents data on the state-by-state relative wellbeing of American citizens.

Well-Being Index, 2011

■ Higher range ■ Midrange ■ Lower range



Farm-Level Price Projections

USDA | [READ STORY](#)

Despite projected short-term decline, U.S. farm-level prices for such agricultural staples as corn, wheat, and soy are expected to sustain historic highs.

President's Corner

Scholarships are still available to attend the [2012 Rural Community Conference](#), May 15-16 in Bozeman, MT.

We also have updated our [Session Descriptions and Speaker Bios page](#).

Please [Register](#) today!

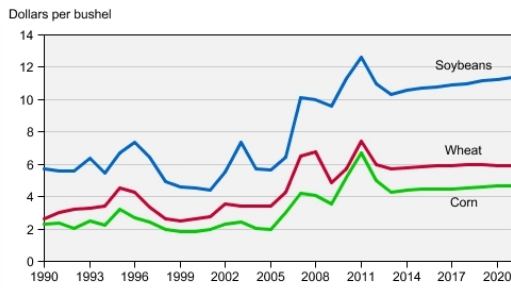
-Paul Lachapelle
MACDEP President

Upcoming Events

Growing Sustainable Communities

May 2-3, 2012
Sonoma County, CA
Sponsor: Applied Solutions & Sonoma County Water Agency

FRED 2012 (Focus on Rural Entrepreneurial Dev.)

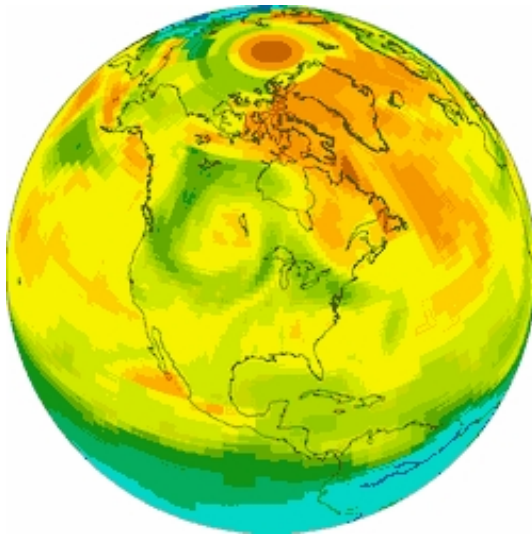


Source: USDA Agricultural Projections to 2021, February 2012.
USDA, Economic Research Service.

CarbonTracker Research Tool

ESRL | [READ STORY](#)

The ESRL's Global Monitoring Division provides an online tool called CarbonTracker, which offers a variety of maps, graphs, and [movies](#) representing data from studies on world carbon emission flux through the 2000's.



Rural Population Numbers for 2010

Daily Yonder | [READ STORY](#)

Though the number of U.S. citizens living in rural areas decreased 1.2% between 2000 and 2010, nearly 30% of the American population still opts for the rural life.

May 3-5, 2012
Fairfield, IA
Sponsor: Fairfield
Entrepreneurs Association

IEDC 2012: Driving Innovation and Prosperity

June 10-12, 2012
St. Louis, MO
Sponsor: International
Economic Development
Council

ALIA Summer Institute

June 18-23, 2012
Halifax, Nova Scotia, Canada
Sponsor: ALIA Institute

Reclaiming Vacant Properties Conference

June 20-23, 2012
New Orleans, LA
Sponsor: Center for
Community Progress

Grants, Awards & Jobs

Grants for Programs With Demonstrated Success in Helping Children Thrive

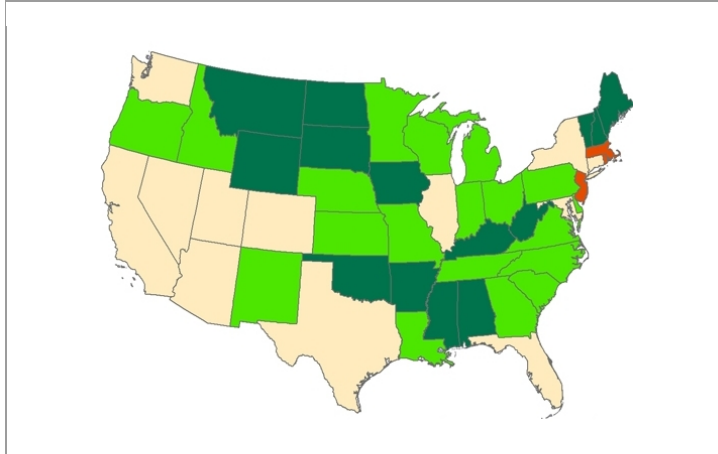
Deadline: May 1, 2012
Funder: Temple Hoyne Buell
Foundation

Metlife Foundation Creativity and Aging Technical Assistance Grant

Deadline: May 4, 2012
Funder: National Center for
Creative Aging

Bush Fellowship Program

Deadline: March 7 to May 4,
2012; or May 9 to July 9, 2012
Funder: Bush Foundation



Girls and Boys in Math and the Sciences

Engineering Degree | [READ STORY](#)

An infographic from engineeringdegree.net compares various data between boys and girls related to math and science education.



Farmland Value by Region

USDA | [READ STORY](#)

According to this USDA study, the value of American farmland varies widely by region, such that national averages can be misleading. This chart displays farmland value data by region.

Rural and Low-Income School Program

Deadline: Ongoing
Funder: U.S. Department of Education

Earn a Degree While Working in Rural Community Development

Deadline: Ongoing
Funder: Rural Development Leadership Network

Rural Transit Assistance Programs (RTAP)

Deadline: Ongoing
Funder: Federal Transit Association, U.S. Department of Transportation

National/International News

Record Low Suburb Growth

Denver Post; April 5

Four-Year Low Unemployment Claims

Salt Lake Tribune; April 5

Smallest U.S. Town Auctioned for \$900,000

Alternative Press; April 5

Public Lands Drilling Procedures Expedited

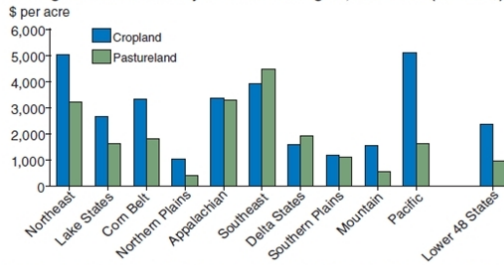
Helena IR; April 3

EPA Proposes New Curbs on Greenhouse Gas Emissions

Christian Science Monitor; March 27

Montana News

Average farmland value by land use and region, as of 2007 (in 2005 \$)

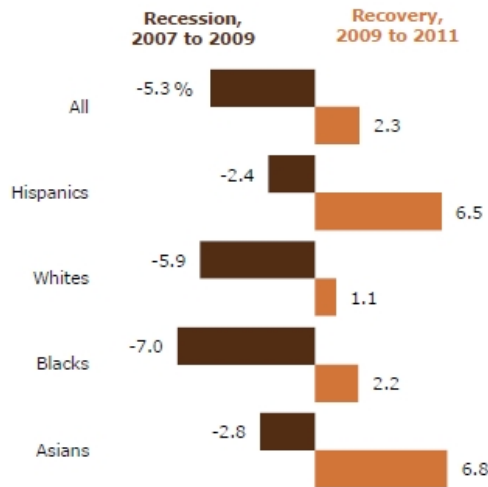


Source: USDA, ERS analysis of National Agricultural Statistics Service June Area Survey data.

Job Recovery Demographics

Pew Research Center | [READ STORY](#)

This report traces job recovery patterns among the major American population demographics--by ethnicity, gender, race, and nativity--showing disparate levels of recovery across demographic lines.



Heritage Propane Layoffs to Oversee Student Debt

Helena IR; April 5

MT & WA Join Secure Communities

Great Falls Tribune; April 5

MT Energy Expo Sells Out

Billings Gazette; April 3

Schweitzer Backs Bison Transplants

Missoulian; April 3

Tester Backs Oil Export Ban

Billings Gazette; March 28



MSU Extension Community Development | Wilson Hall 2-117 P.O. Box 172240 | Bozeman, MT 59717-2240

Tel: (406) 994-3620

Back issues of the MACDEP E-news are available [here](#)

To subscribe to the Montana CD E-Newsletter, send a request to: commdev@montana.edu